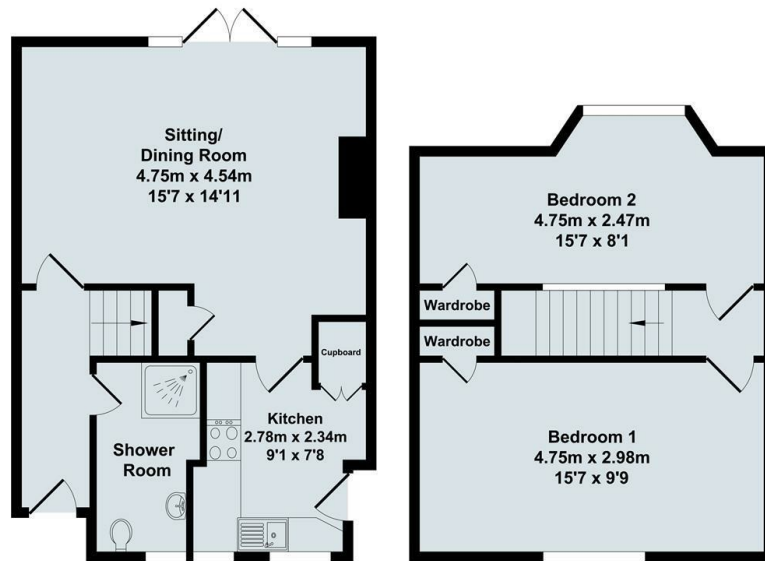




32 Milton Lane, Steventon, Oxon, Oxfordshire, OX13 6SA

£1,200 PCM - 28th July 2026.

- Character Cottage
- Easy Access Milton Park & Didcot
- Parking on street (non reserved)
- Two Double Bedrooms
- Gas Central Heating
- EPC Rating C.
- Overlooking Village Green
- Council Tax Band E
- 721 Sq Ft

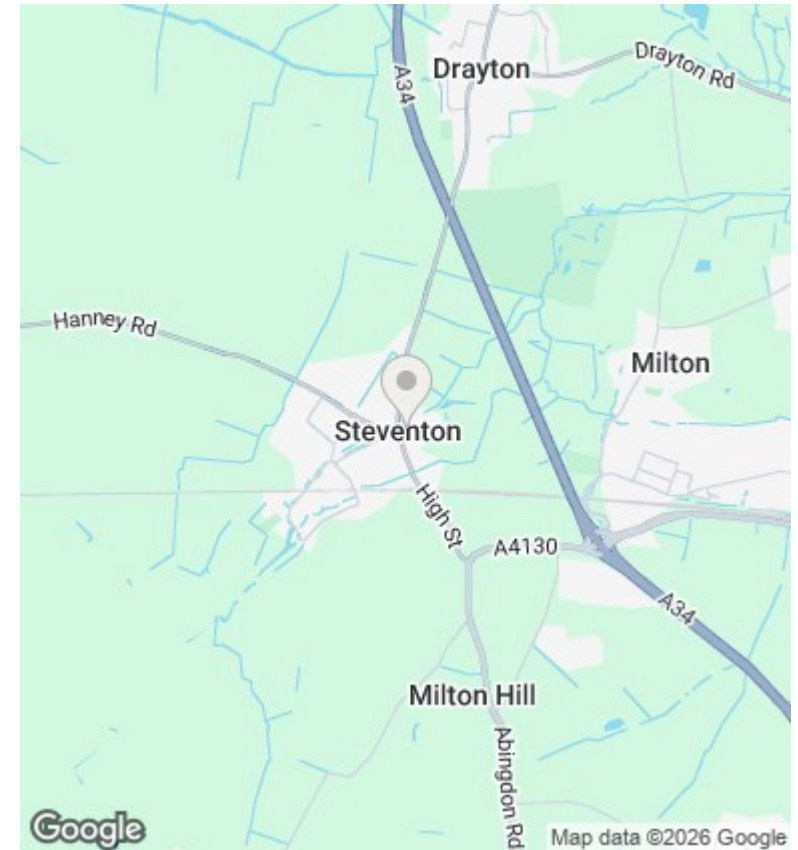


Ground Floor
Approx. Floor
Area 36.37 Sq.M.
(391 Sq.Ft.)



First Floor
Approx. Floor
Area 30.53 Sq.M.
(329 Sq.Ft.)

Total Approx. Floor Area 66.90 Sq.M. (721 Sq.Ft.)



Directions

Viewings

Viewings by arrangement only. Call 01235 554950 to make an appointment.

Council Tax Band

E

EPC Rating:

C

Energy Efficiency Rating		
	Current	Potential
<i>Very energy efficient - lower running costs</i>		
(92 plus) A		
(81-91) B		
(69-80) C	70	73
(55-68) D		
(39-54) E		
(21-38) F		
(1-20) G		
<i>Not energy efficient - higher running costs</i>		
England & Wales	EU Directive 2002/91/EC	